

1.1 CONTENTS OF VOLUME 1 BINDER

The volume 1 binder contains the Operation and Maintenance Manual for your KOMATSU Hydraulic Mining Shovel.

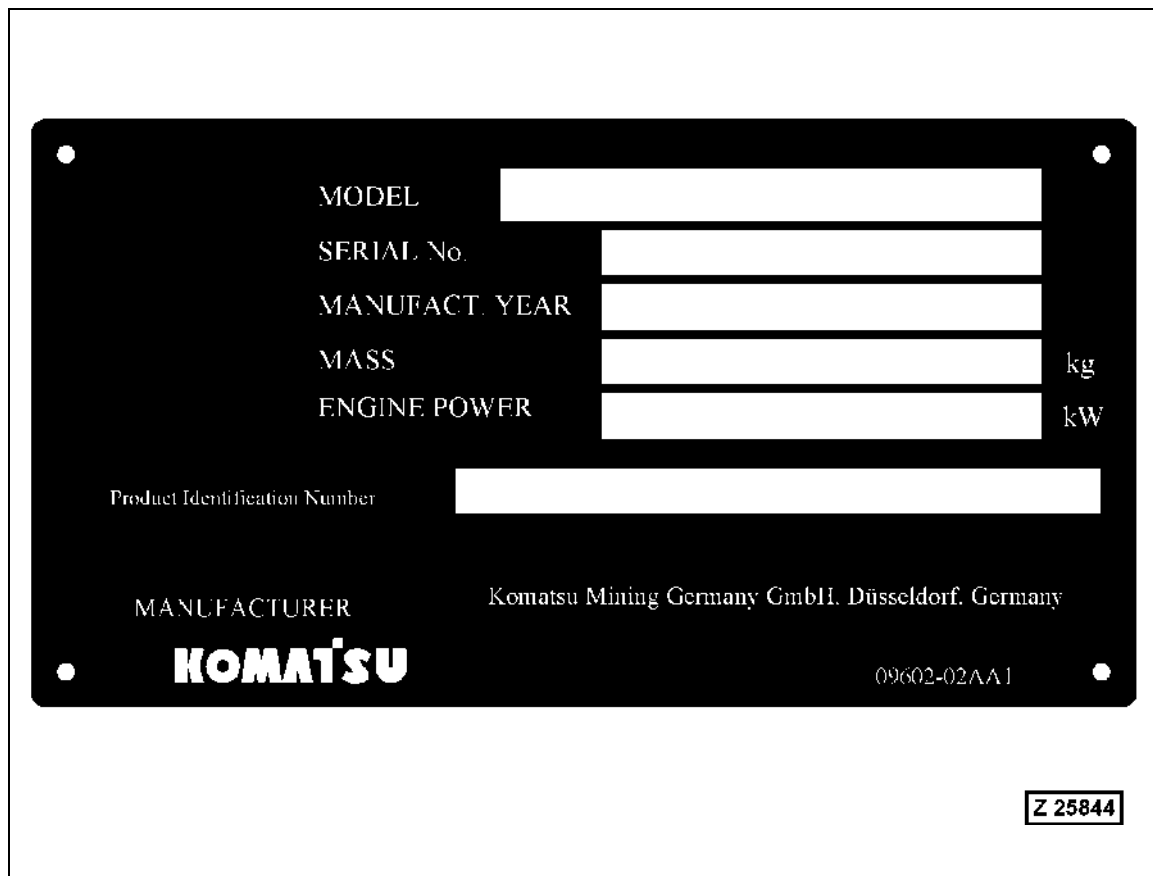
Manufacturer of this Product

Komatsu Mining Germany GmbH
Buscherhofstrasse 10
40599 Düsseldorf
Germany

NOTICE

- This Operation and Maintenance Manual is the Original Edition issued in February 2010.

1.1.1 SPECIFICATION AND SERIAL NUMBER PLATE



The specification and serial number plate is located on the outside of the Operator's cab near the door.

Product Identification Number

The Product Identification Number (PIN-Code) is printed in the space provided on the specification and serial number plate, illustration Z25844.

CONTENTS

2.1	SAFETY INFORMATION	2-3
2.2	OVERVIEW.....	2-4
2.2.1	NORMAL OPERATIONS	2-4
2.2.2	REGULAR MAINTENANCE.....	2-4
2.2.3	TROUBLESHOOTING, ADJUSTMENTS AND REPAIR	2-4
2.2.4	ADDITIONAL SAFETY PRECAUTIONS FOR ASSEMBLING, DISASSEMBLING AND TRANSPORTATION OF THE EXCAVATOR.....	2-4
2.3	SOUND PRESSURE LEVEL IN THE OPERATOR'S CAB.	2-5
2.4	GENERAL PRECAUTIONS COMMON TO OPERATION ON THE EXCAVATOR.....	2-6
2.4.1	UNDERSTANDING THE MACHINE	2-6
2.4.2	PRECAUTIONS BEFORE STARTING OPERATION ON THE EXCAVATOR	2-6
2.4.2.1	ENSURING SAFE OPERATION.....	2-6
2.4.3	PREPARATIONS FOR SAFE OPERATION.....	2-6
2.4.3.1	PRECAUTIONS REGARDING SAFETY RELATED EQUIPMENT.....	2-6
2.4.3.2	INSPECTING THE MACHINE.....	2-6
2.4.3.3	WEAR WELL FITTING CLOTHES AND PROTECTIVE EQUIPMENT	2-7
2.4.3.4	KEEP MACHINE CLEAN	2-7
2.4.3.5	PRECAUTIONS INSIDE OPERATOR'S COMPARTMENT	2-7
2.4.3.6	PROVIDE FIRE EXTINGUISHER AND FIRST AID KIT	2-8
2.4.3.7	IF A PROBLEM IS FOUND	2-8
2.4.4	FIRE PREVENTION.....	2-8
2.4.4.1	PRECAUTIONS TO PREVENT FIRE	2-8
2.4.4.2	ACTION IF FIRE OCCURS.....	2-9
2.4.4.3	EMERGENCY EXIT FROM OPERATOR'S CAB	2-10
2.4.5	PRECAUTIONS WHEN CLEANING CAB GLASS	2-10
2.4.6	PRECAUTIONS WHEN GETTING ON OR OFF THE MACHINE	2-10
2.4.6.1	USE HANDRAILS AND STEPS WHEN GETTING ON OR OFF THE MACHINE.....	2-10
2.4.6.2	NO JUMPING ON OR OFF THE MACHINE	2-10
2.4.6.3	NO PEOPLE ON THE ATTACHMENT	2-10
2.4.6.4	WORKING IN HIGH PLACES	2-10
2.4.6.5	LEAVING OPERATOR'S SEAT WITH LOCK	2-11
2.4.6.6	LEAVING THE MACHINE	2-11
2.4.7	BURN PREVENTION.....	2-11
2.4.7.1	HOT COOLANT	2-11
2.4.7.2	HOT OIL	2-12
2.4.8	PRECAUTIONS RELATED TO PROTECTIVE STRUCTURES	2-12
2.4.8.1	UNAUTHORIZED MODIFICATION.....	2-12
2.4.9	PRECAUTIONS AT JOBSITE.....	2-14
2.4.9.1	VISIBILITY FROM OPERATOR'S SEAT	2-15
2.4.9.2	CAMERA SYSTEM WITH MONITORS.....	2-15
2.4.9.3	ENSURE GOOD VISIBILITY.....	2-15
2.4.9.4	CHECKING SIGNS AND SIGNALMAN'S SIGNALS.....	2-15
2.4.9.5	INVESTIGATE AND CONFIRM JOBSITE CONDITIONS.....	2-16
2.4.9.6	DO NOT GO CLOSE TO HIGH VOLTAGE CABLES	2-16
2.4.9.7	WORKING ON LOOSE GROUND	2-17
2.4.9.8	GAS, DUST, STEAM AND SMOKE	2-17
2.4.9.9	VENTILATION OF ENCLOSED AREAS.....	2-18